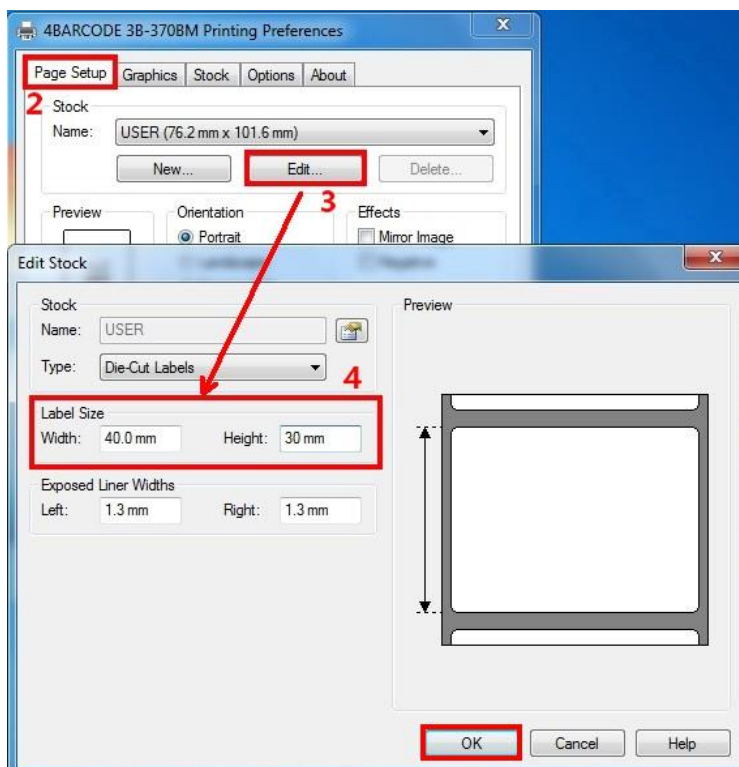
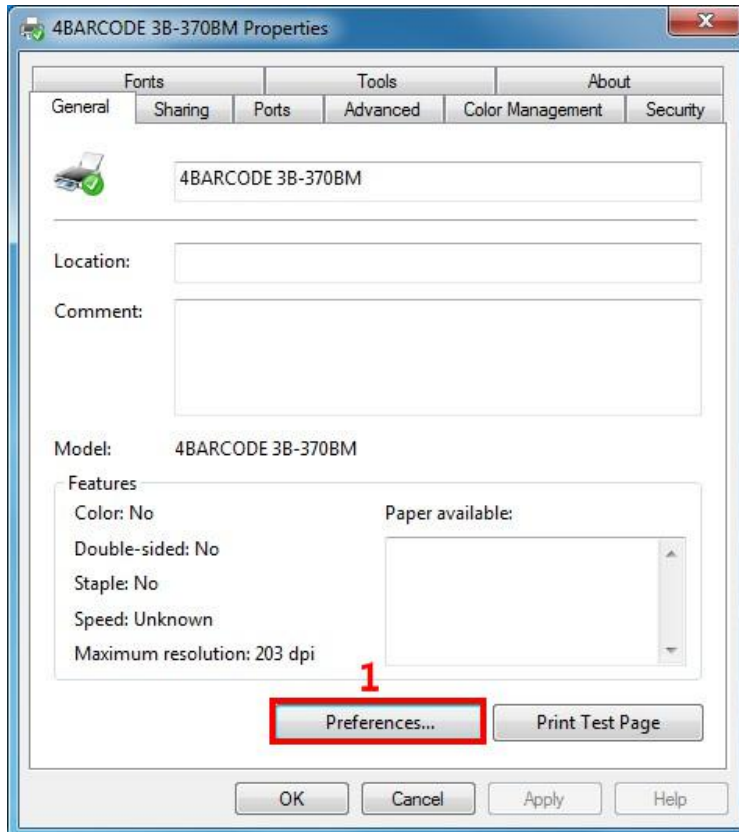


# Setup instruction of Barcode driver

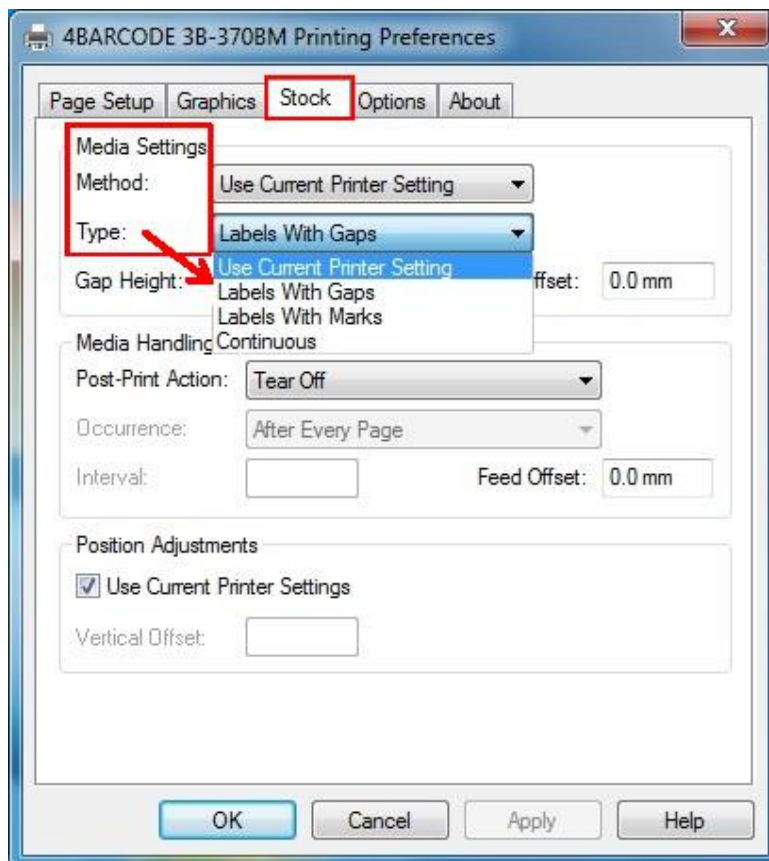
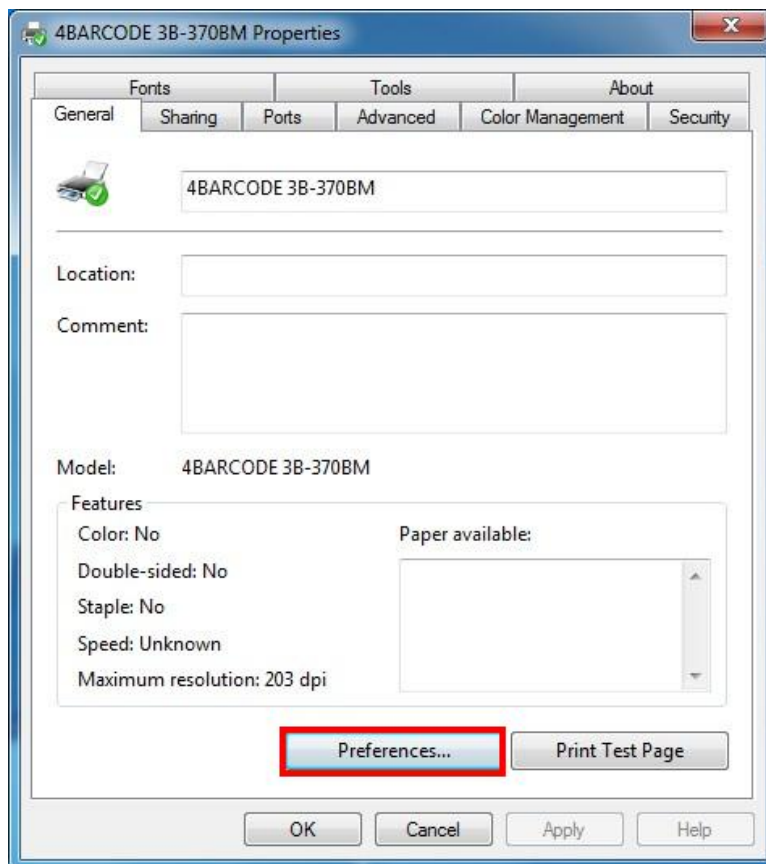
1、 Please refer below steps for page setup:

General→“Preferences”→“Page Setup”→Click“Edit”to adjust the Label Size(With/ Height)



2、 Please refer below steps for “stock” setup:

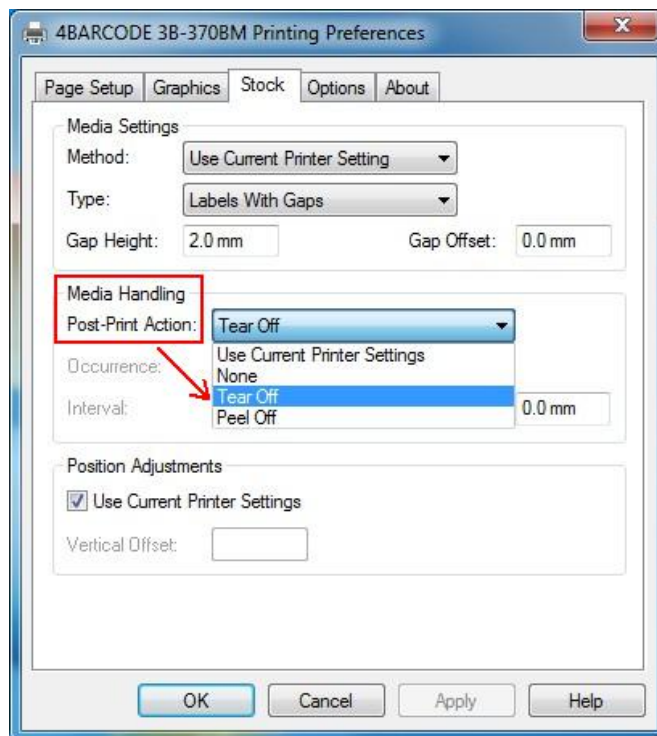
General→ “Preferences” → “Stock” →(Media Settings)Select the paper type, as follows:



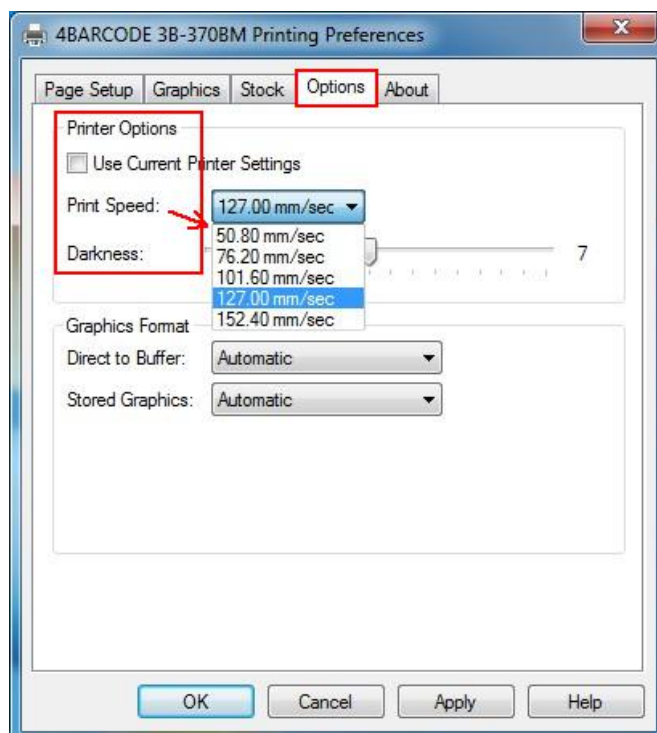
3、 “Stock” →Media Handling (Post-Print Action: choose “Tear off” )

Tear Off: Can continuously print, tear off paper directly.

Peel Off: Print paper one by one, different loading paper.



4、 Click “Options” → “Printer options” to set Print Speed/Darkness, 5 grades of print speed supported: 50.8mm/s; 76.2mm/s; 101.6mm/s; 127mm/s; 152.4mm/s, The default print speed is 127mm/s, The default darkness is 7, it has 1-15 grades。



5、 “Stock” →Media Settings (Type: choose “Label With Gaps” , Gap Height: 2.0mm )

Gap height means the gap height between labels。

